



SAW Components

Data Sheet R2711





SAW Components

R2711

Resonator

868,35 MHz

Data Sheet

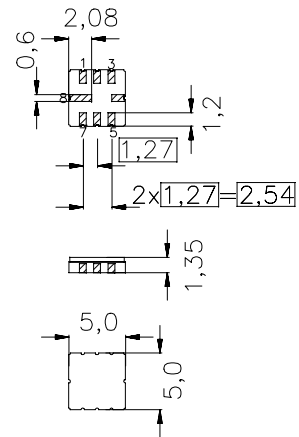
SMD Ceramic package **QCC8C**

Features

- 2-port resonator
- nominal 180°-phase at resonance
- Provides reliable, fundamental mode, quartz frequency stabilization i.e. in transmitters or local oscillators
- Passivation layer: Protec

Terminals

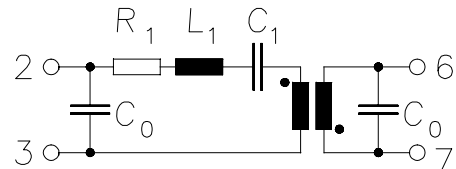
- Ni, gold plated



Dimensions in mm, approx. weight 0,1 g

Pin configuration

- | | |
|-----|-------------------------|
| 2 | Input / Output |
| 6 | Output / Input |
| 7 | Ground (Input / Output) |
| 3 | Ground (Output / Input) |
| 4,8 | Ground (case) |



| Type | Ordering code | Marking and Package according to | Packing according to |
|-------|-------------------|----------------------------------|----------------------|
| R2711 | B39871-R2711-U310 | C61157-A7-A56 | F61074-V8169-Z000 |

Electrostatic Sensitive Device (ESD)

Maximum ratings

| | | | | |
|----------------------------|-----------|---------|-----|-----------------------|
| Operable temperature range | T_A | -45/+85 | °C | between any terminals |
| Storage temperature range | T_{stg} | -45/+85 | °C | |
| DC voltage | V_{DC} | 0 | V | |
| Source power | P_s | 0 | dBm | |



SAW Components

R2711

Resonator

868,35 MHz

Data Sheet

Characteristics

Reference temperature: $T_A = 25\text{ °C}$
 Terminating Source impedance: $Z_S = 50\ \Omega$
 Terminating Load impedance: $Z_L = 50\ \Omega$

| | | min. | typ. | max. | |
|---|-----------------|-------------|-------------|-------------|--------------------|
| Center frequency (center frequency between 3 dB points) | f_c | 868,25 | 868,35 | 868,45 | MHz |
| Minimum insertion attenuation | α_{\min} | — | 7,0 | 9,0 | dB |
| Phase at f_c | φ | — | 130 | — | ° el. |
| Loaded quality factor | Q_L | 3000 | 3600 | — | |
| Unloaded quality factor | Q_U | 5500 | 6600 | — | |
| Ageing of f_c | | — | — | -10/+40 | ppm |
| Equivalent circuit elements | | | | | |
| Motional capacitance | C_1 | — | 0,279 | — | fF |
| Motional inductance | L_1 | — | 120,4 | — | μH |
| Motional resistance | R_1 | — | 100 | — | Ω |
| Input / Output capacitance | C_0 | — | 1,9 | — | pF |
| Temperature coefficient of frequency ¹⁾ | TC_f | — | -0,03 | — | ppm/K ² |
| Turnover temperature | T_0 | 15 | — | 35 | °C |

¹⁾ Temperature dependence of f_c : $f_c(T_A) = f_c(T_0)(1 + TC_f(T_A - T_0)^2)$



SAW Components

R2711

Resonator

868,35 MHz

Data Sheet

Published by EPCOS AG

Surface Acoustic Wave Components Division, SAW CE AE PD

P.O. Box 80 17 09, D-81617 München

© EPCOS AG 2003. All Rights Reserved. Reproduction, publication and dissemination of this brochure and the information contained therein without EPCOS' prior express consent is prohibited.

The information contained in this brochure describes the type of component and shall not be considered as guaranteed characteristics. Purchase orders are subject to the General Conditions for the Supply of Products and Services of the Electrical and Electronics Industry recommended by the ZVEI (German Electrical and Electronic Manufacturers' Association), unless otherwise agreed.

This brochure replaces the previous edition.

For questions on technology, prices and delivery please contact the Sales Offices of EPCOS AG or the international Representatives.

Due to technical requirements components may contain dangerous substances. For information on the type in question please also contact one of our Sales Offices.