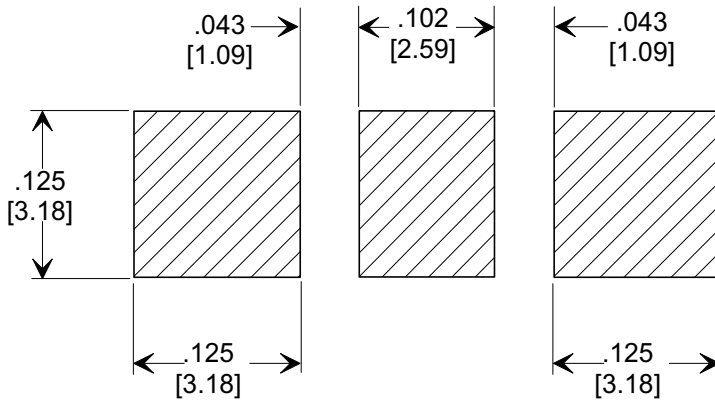
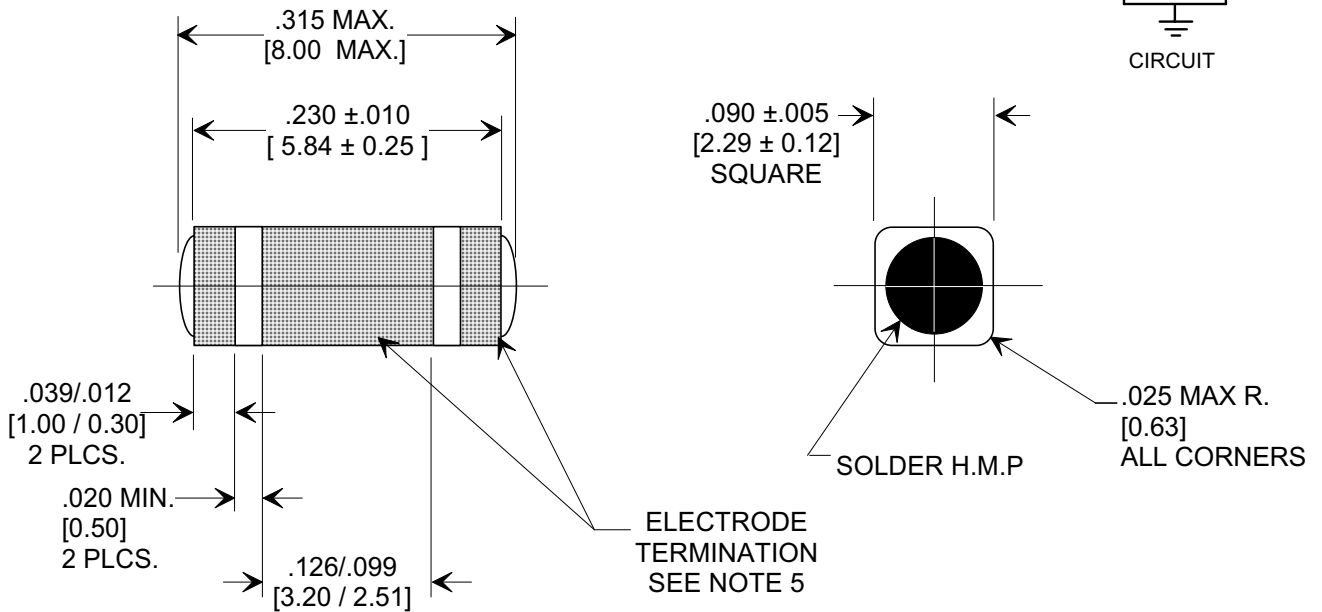
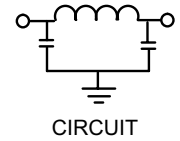
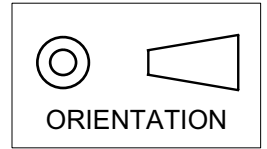


MARKETING SALES DRAWING
DIMENSIONS IN INCHES - DO NOT SCALE THIS DRAWING
DIMENSIONS IN METRIC []

Electrical Testing
 per Tusonix standard
 test plans and Mil-Std-202
 Test Methods.



SUGGESTED
MOUNTING PATTERN

1. INDUCTANCE TO BE 0.1 H MINIMUM.
2. PACKAGE: BULK OR BLISTER TAPE TO IEC-60286-3 TYPE II AND EIA-481-A.
3. TUSONIX STANDARD PART NUMBER: 4700-003. TUSONIX RoHS COMPLIANT PART NUMBER: 4700-003 LF. CUSTOMER MUST SPECIFY STANDARD OR RoHS PART NUMBER WHEN ORDERING.
4. PART MARKING: STANDARD PART: NO MARKING. RoHS PART: LABELED ON PACKAGING ONLY.
5. ELECTRODE TERMINATION: STANDARD 60/40 SOLDER; RoHS COMPLIANT - MATTE TIN.

CAP.	TOLERANCE	WVDC		TEST VOLTAGE	I.R.MIN. @ 100 (VDC.)	IDC	TYPICAL NO LOAD INSERTION LOSS dB AT 25°C PER MIL-STD-220		
		85°C	+125°C				10 MHZ	100 MHZ	1 GHZ
2000 pF	GMV	100	100	300 VDC	10 G	10 A	10	45	70

X-2015 Rev-0

REVISION RECORD	Original Release	0	REISSUE 941020-1 DIM. .230 WAS .238 E.C. 11-16-94	REISSUE 941020-1 REVISED DWG. ORIENTATION SYMBOL & I.R. MIN. @ 100 (VDC) ADDED S.M. 02-13-03	20030213-1-12 REVISED DRAWING. S.M. 06-20-03	20030619-2-01 ADDED NOTES 3,4 & 5. S.M. 06-10-05	20050607-5-02	--TOLERANCES-- Unless Otherwise Specified	Title SURFACE MOUNT SQUARE STYLE PI FILTER		
	C.O. 941020-1	1						DECIMAL ± .005 [0.13]		Drawn FG 9-9-94	Scale 7 X
	ADDED DC COLUMN E.C. 10-26-94	2						ANGLES ±	Approved NV 9-9-94	A	4700-003
	REISSUE 941020-1	3						TUSONIX TUCSON, ARIZONA	Approved NV 9-9-94		
	ADDED DC COLUMN E.C. 10-26-94	4									
REISSUE 941020-1	5										